

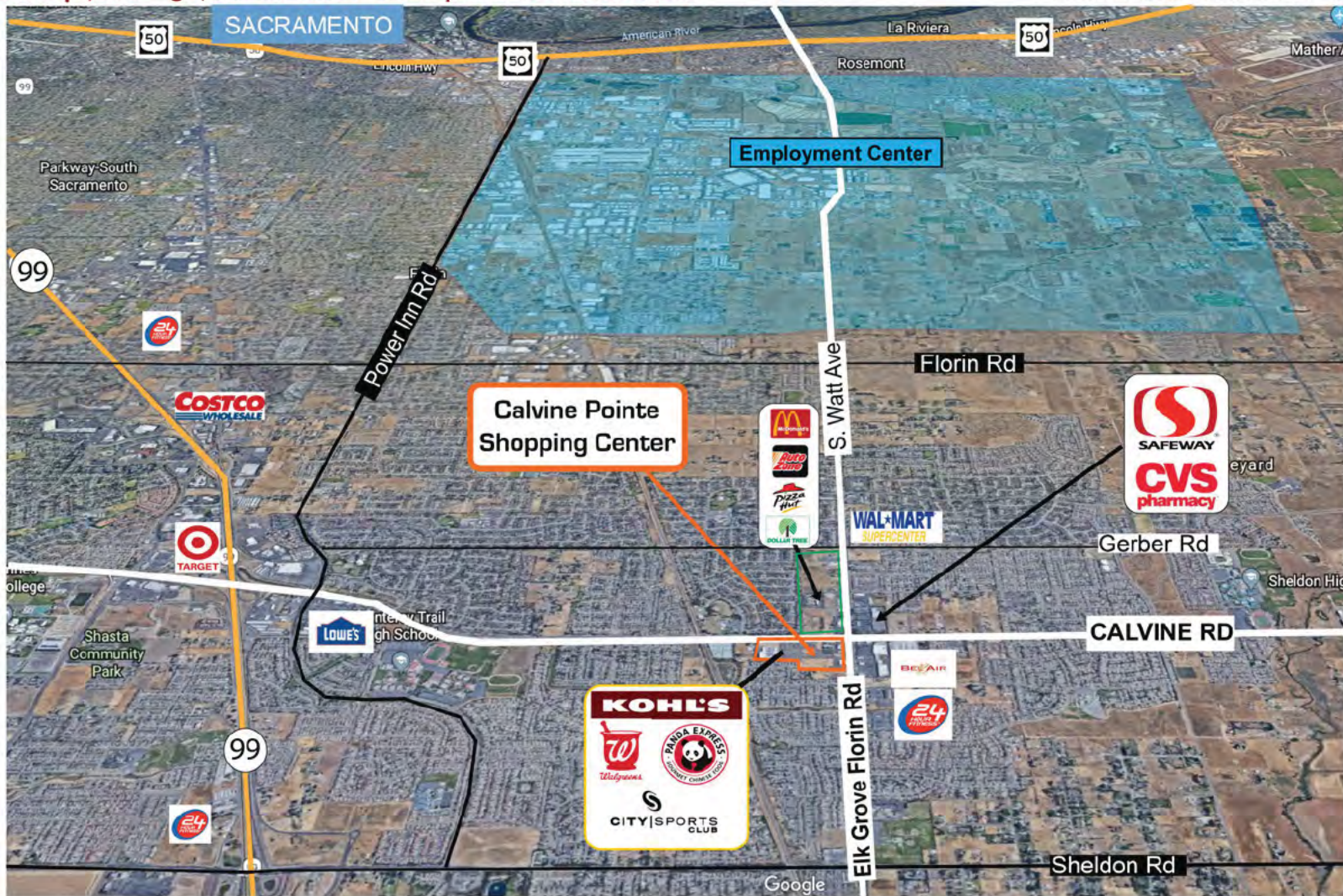
ELK GROVE, CA

CALVINE POINTE

SHOPPING CENTER

NOW LEASING | 1,200 - 50,000 SF AVAILABLE | FULL COMMISSION

SWC Calvin & Elk Grove Florin Roads



☎ 916-399-3221
 ✉ info@petrovichdevelopment.com

825 K Street, Floor 3
 Sacramento, CA 95814

www.PetrovichDevelopment.com



Intersection Overview



Site Plan Overview



Project Highlights

- 300,000 SF shopping center located the most dominant retail intersection just east of Highway 99
- Anchored by Kohl's, City Sports and Walgreen's in Elk Grove, CA on Sacramento boarder
- Under-served area on east side of Elk Grove
- Highest volume intersection in entire south Sacramento region
- Highest population in entire south Sacramento region
- Elk Grove Florin/Watt Ave is the longest north/south arterial in the entire Sacramento region
- Calvine serves as the by pass from interstate 99 to Highway 50



Demographics



RESIDENTIAL POPULATION

1.5 MILE
8,922

3 MILE
127,158

5 MILES
284,017



AVG. HOUSEHOLD INCOME

1.5 MILE
\$87,930

3 MILE
\$85,479

5 MILES
\$84,237

Traffic Counts

Calvine Rd	52,830 CPD
Elk Grove Florin Rd	32,670 CPD
Combined	85,500 CPD

Pad 4 with Drive-Thru

