

STONE POINTE

Shopping Center

Sacramento, CA



For further information, contact:

Andrea Sessions Lic # 01434048

916-277-8122

andrea@theedwardsco.com

Miles Edwards Lic # 02186200

916-277-8124

miles@theedwardsco.com



5,300 SF Now Available

Divisible to 1,250sf

4001 Freeport Blvd
Sacramento, CA



THE
EDWARDS
COMPANY
commercial real estate services

© 2021 The Edwards Company. All Rights Reserved. The information contained herein has been carefully compiled from sources considered reliable; however, we make no guarantee, warranty, or representation of its accuracy. You and your tax and legal advisors should conduct your own investigation of the property and transaction.

PROPERTY HIGHLIGHTS

Sacramento, CA



- Within walking distance from Sacramento City College with over 24,242 students and nearly 1,100 faculty members
- Easy access to Land Park, Curtis Park and Hollywood Park neighborhoods
- Unprecedented high identity hard corner infill retail property with unobstructed views and access from both Freeport Blvd and Sutterville Road
- Positioned midway between I-5 and Hwy 99
- Located at a signalized intersection - 45,719 ADT
- Ample parking available with 4.2/1,000

2023 DEMOS FOR STONE POINTE

POPULATION	AVERAGE HOUSEHOLD INCOME
1-Mile: 15,370	1-Mile: \$119,588
3-Mile: 160,405	3-Mile: \$90,759
5-Mile: 395,766	5-Mile: \$90,093



SITE MAP

Sacramento, CA

5,300 SF AVAILABLE



WWII Memorial



5,300 SF
For Lease
Divisible to 1,250sf

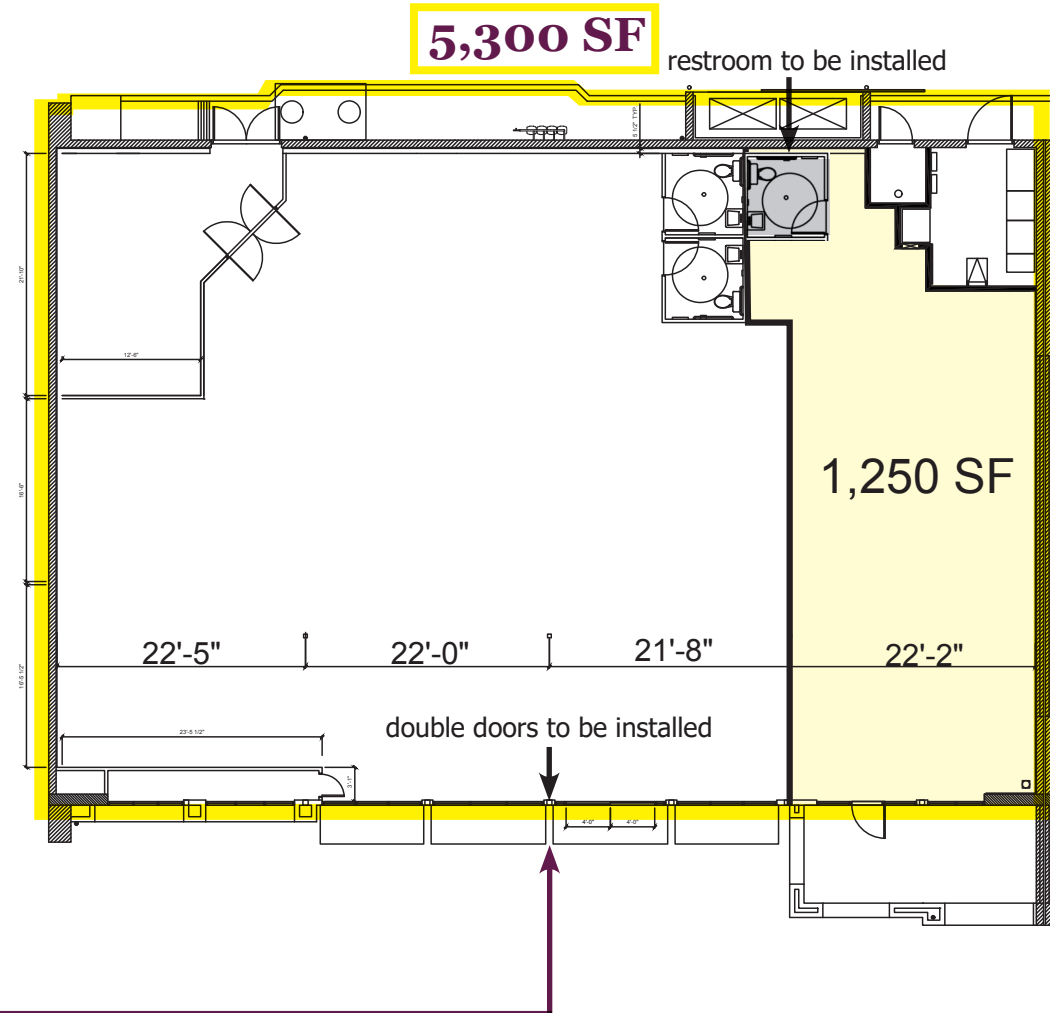
CONCEPTUAL DEMISING PLAN

Sacramento, CA



TOTAL AVAILABLE = 5,300 SF

OPTION = 1,250 SF



SUTTERVILLE RD

25,204 ADT

SURROUNDING AREA OVERVIEW

Sacramento, CA



WEST SACRAMENTO



DOWNTOWN SACRAMENTO
Daytime Population: 95,000

MIDTOWN SACRAMENTO
Daytime Population: 88,663



UPPER LAND PARK



284,260 ADT

LAND AND CURTIS PARK COMMUNITY
AVERAGE HH INCOME: \$161,910
POPULATION: 19,781



CURTIS PARK



284,260 ADT

LAND PARK

CROCKER VILLAGE



17,750 ADT

SUTTERVILLE RD

